

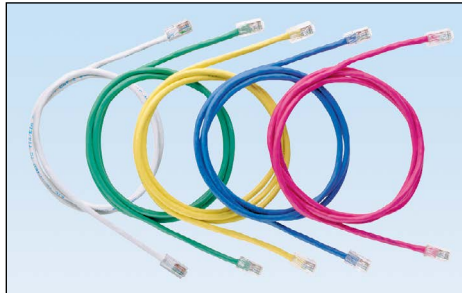
# NetKey® Category 5e UTP Patch Cords

# PANDUIT®

DATA SHEET

## specifications

Category 5e/Class D patch cords are constructed of UTP 24 AWG stranded copper cable and a modular plug at each end. Patch cords are used in all work area outlets and patch panels. Patch cords are wired to be compatible with both T568A and T568B wiring schemes.



## technical information

|   |  |
|---|--|
| <b>Category 5e/Class D performance:</b> | Exceeds ANSI/TIA-568-C.2 Category 5e and ISO 11801 Class D channel requirements at swept frequencies up to 100 MHz<br>Meets ANSI/TIA-568-C.2 and ISO 11801 Category 5e component requirements at swept frequencies up to 100 MHz |
| <b>Cable diameter:</b>                  | 0.215 in. (5.5mm) nominal  |
| <b>FCC compliance:</b>                  | Complies with ANSI/TIA-1096A (formerly FCC Part 68); contacts plated with 50 microinches of gold   |
| <b>IEC compliance:</b>                  | Meets IEC 60603-7  |
| <b>PoE compliance:</b>                  | Supports IEEE 802.3af/802.3at and proposed 802.3bt type 3 and type 4 PoE applications  |
| <b>Safety compliance:</b>               | cULus Listed; UL 1863 and CAN/CSA-C22.2 (UL File E129886)  |
| <b>RoHS compliance:</b>                 | Compliant  |
| <b>Flammability rating:</b>             | CM rated   |

## key features and benefits

|  |  |
|--|--|
| <b>100% performance tested</b>                 | Confidence that each patch cord delivers specified performance   |
| <b>Patented tangle free latch</b>              | Prevents snags and provides easy release   |
| <b>Identification</b>                          | Provides identification of performance level, length, and quality control number for future traceability |
| <b>Variety of colors and lengths available</b> | Meets individual length and color-coding requirements  |

## applications

Applications include:

- Ethernet 10BASE-T, 100BASE-T (Fast Ethernet), and 1000BASE-T (Gigabit Ethernet)
- 155 Mb/s ATM, 622 Mb/s ATM, 1.2 Gb/s ATM
- Token Ring 4/16
- Voice over internet protocol (VoIP)

[www.panduit.com](http://www.panduit.com)

### NetKey® Network Components

#### NetKey® Category 5e Patch Cords

**Foot lengths:** NK5EPC3\*Y  
**Meter lengths:** NK5EPC1M^Y

#### NetKey® Category 5e Jack Modules

**Leadframe module:** NK5E88M\*\*Y  
**Convenience pack of 25 leadframe modules:** NK5E88M\*\*-Q  
**Punchdown module:** NKP5E88M\*\*  
**Convenience pack of 25 punchdown modules:** NKP5E88M\*\*-Q

#### NetKey® Category 5e Punchdown Patch Panels

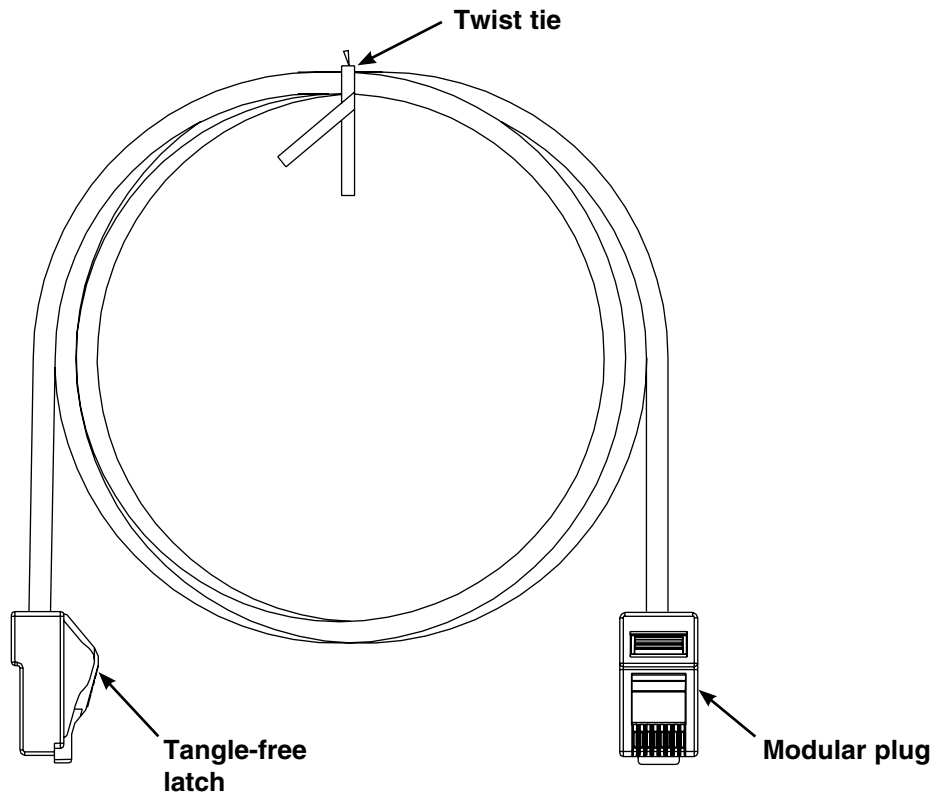
**12-port:** NK5EPPG12WY  
**24-port, 1 RU:** NK5EPP24P  
**48-port, 2 RU:** NK5EPP48P

\*For standard lengths other than 3 feet (5, 7, 10, 14 or 20) change the length designation in part number to the desired length. For standard cable colors other than Off White, add suffix BU (Blue), GR (Green), RD (Red) or YL (Yellow) before the Y at the end of the part number. For example, the part number for a blue 5 foot patch cord is NK5EPC5BUY.

^For standard lengths other than 1 meter (2, 3, 4 or 5) change the length designation in part number to the desired length. For standard cable colors other than Off White, add suffix BU (Blue), GR (Green), RD (Red) or YL (Yellow) before the Y at the end of the part number. For example, the part number for a blue 5 meter patch cord is NK5EPC5MBUY.

\*\*To designate a color, add suffix IW (Off White), EI (Electric Ivory), IG (Int'l Gray), WH (White), BL (Black), OR (Orange), RD (Red), BU (Blue), GR (Green) or YL (Yellow).

# NetKey® Category 5e Patch Cords



---

## WORLDWIDE SUBSIDIARIES AND SALES OFFICES

PANDUIT CANADA  
Markham, Ontario  
cs-cdn@panduit.com  
Phone: 800.777.3300

PANDUIT EUROPE LTD.  
London, UK  
cs-emea@panduit.com  
Phone: 44.20.8601.7200

PANDUIT SINGAPORE PTE. LTD.  
Republic of Singapore  
cs-ap@panduit.com  
Phone: 65.6305.7575

PANDUIT JAPAN  
Tokyo, Japan  
cs-japan@panduit.com  
Phone: 81.3.6863.6000

PANDUIT LATIN AMERICA  
Guadalajara, Mexico  
cs-la@panduit.com  
Phone: 52.33.3777.6000

PANDUIT AUSTRALIA PTY. LTD.  
Victoria, Australia  
cs-aus@panduit.com  
Phone: 61.3.9794.9020

For a copy of Panduit product warranties, log on to [www.panduit.com/warranty](http://www.panduit.com/warranty)

For more information

Visit us at [www.panduit.com](http://www.panduit.com)

Contact Customer Service by email: [cs@panduit.com](mailto:cs@panduit.com)  
or by phone: 800.777.3300

**PANDUIT®**

©2015 Panduit Corp.  
ALL RIGHTS RESERVED.  
**NKDS33--WW-ENG**  
5/2015